



# 2020 Mount Pearl Frosty Festival Accessibility Guide

Developed in partnership with



## **Frosty Festival Accessibility Features**

- Festival schedule and Accessibility Guide available in alternate formats
- Listening devices for those with hearing loss available at various events
- Accessible lane with advanced ticket at venue main entrance
- Designated accessible viewing areas at main events
- Quiet/sensory-friendly space available
- Accessible transit during Pedestrian Parade of Lights (reservation required)
- Designated Attendant Passes honoured (Access2 Card & City St. John's Attendant Pass)
- Blue Zone Parking spaces at venues for registered permits
- Inclusion Crew Volunteers at main events
- Get accessibility questions answered:  
Call/Text: 709-697-3323 Toll Free: 1-844-517-1376

## **The Reid Community Centre**

### **Thursday, February 6<sup>th</sup>**

- **8pm-10:30pm:** Frosty's Bingo Bonanza

### **Saturday, February 8<sup>th</sup>**

- **9am-10:30am:** The Frosty and Friends Breakfast

### **Sunday, February 9<sup>th</sup>**

- **2pm-5pm:** Frosty's Brewfest – Craft Beer Tasting

### **Monday, February 10<sup>th</sup>**

- **7pm-10pm:** Seniors 120s Card Game

### **Tuesday, February 11<sup>th</sup>**

- **7:30pm-10pm:** Battle of the Brains

**Wednesday, February 12<sup>th</sup>**

- **5pm-6:30pm:** Old-Fashioned Jiggs Dinner
- **7pm-10pm:** The Variety Show

**Thursday, February 13<sup>th</sup>**

- **7pm-10pm:** Dinner Theatre featuring Spirit of Newfoundland "It's Yesterday Once More." A tribute to The Carpenters

**Friday, February 14<sup>th</sup>**

- **7pm-10pm:** Frosty Uncorked - Wine Tasting

**Saturday, February 15<sup>th</sup>**

- **9am-10:30am:** The Princesses and Pirates Breakfast
- **7pm-1am:** Snowball Dinner and Dance featuring 709

**The Reid Centre Accessibility Features**

- Blue Zones parking spaces available (approximately 5 in total)
- The main entrance is equipped with automated buttons for opening with a reception desk located just inside the main lobby
- All facilities are on the one floor
- Multiple types of washrooms available:
  - Located immediately off the large gymnasium there are gender specific change rooms and washrooms. To access the washroom from the gym side, there are no automated buttons available and a patron would be required to push the door open. Once inside the change room/washroom area there is an automated button available to open the door to return to the gym. These change rooms are equipped with a larger stall washroom which is equipped with handrails for support.
  - There is a second "family style" washroom located across the hall from the change rooms immediately next to the Youth Activity Room. This washroom is much larger and is equipped with handrails.



Looking for info on a venue not found here?  
Call/Text: 709-697-3323 Toll Free: 1-844-517-1376



Looking for info on a venue not found here?  
Call/Text: 709-697-3323 Toll Free: 1-844-517-1376

## St. David's Park

### Wednesday, February 5<sup>th</sup>

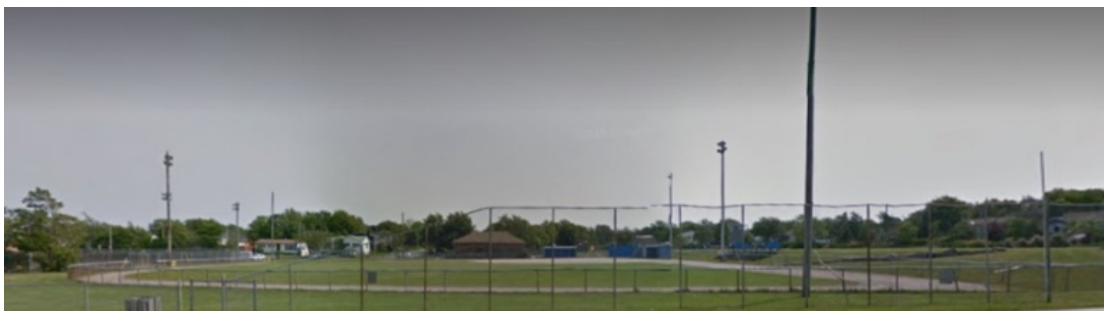
- **6:30pm-8pm:** The Pedestrian Parade of Lights & Cauldron Lighting. O'Donel High School to St. David's Park

### Saturday, February 15<sup>th</sup>

- **11am-12pm:** #Snowga – Outdoor Yoga

### St. David's Park Accessibility Features

- Concrete trail around the park
- Level field



## The Annex

### Thursday, February 6<sup>th</sup>

- **10:00am-11:30am:** Get Messy
- **7pm-9pm:** Wintry ReMix: Art Show

### Tuesday, February 11<sup>th</sup>

- **3:30pm-5pm:** Get Messier

### The Annex Accessibility Features

- Blue Zone parking available
- Entrance equipped with an automated button for easier entry.
- Interior doors are equipped with automatic door button with a large meeting room space.

- Washrooms have accessible features, grab bars, space for maneuverability



Looking for info on a venue not found here?  
Call/Text: 709-697-3323 Toll Free: 1-844-517-1376



## The Summit Centre

### Thursday, February 6<sup>th</sup>

- **5:30pm-8pm:** Try It Day – Summit Artistic Swimming

### Friday, February 14<sup>th</sup>

- **6:45pm-9pm:** Shiver or Giv'er Community Relay Race and Masters Meet

## The Summit Centre Accessibility Features

- Blue zone parking with approximately 10 spaces available in front of building
- Main entrance opens automatically as you approach it.
- The elevator taking patrons to the second floor has an audible cue when you reach the second floor which features a gallery to watch swimming, a small café, meeting room space and a multi-purpose room.
- Hosts accessible change rooms
- Both washrooms on the second floor are designed as gender neutral/family style with ample space inside for maneuverability.
- Ramped entry swimming pool.
- If you have accessibility questions about the facilities, guest services staff are available at the main reception desk near the front entrance to answer any inquiries.





## Park Place Community Centre

Sunday, February 9<sup>th</sup>

- 7pm-10:30pm: Irish Pub Night

Looking for info on a venue not found here?  
Call/Text: 709-697-3323 Toll Free: 1-844-517-1376

**Monday, February 10<sup>th</sup>**

- **7pm-10pm:** Paint & Sip featuring Paint Nite

**Tuesday, February 11<sup>th</sup>**

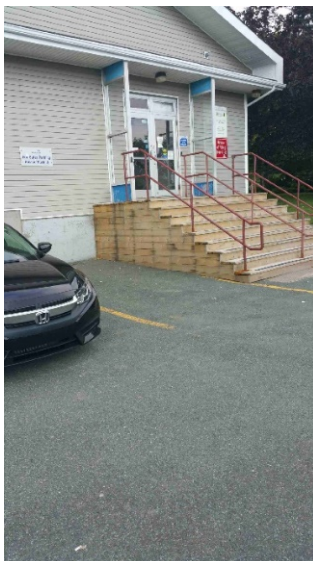
- **2pm-4pm:** Seniors' Afternoon Tea & Goods Bingo

**Saturday, February 15<sup>th</sup>**

- **11am-4:30pm:** Frosty's Texas Hold'em

**Park Place Community Centre Accessibility Features**

- Blue Zone parking
- Both entrances to bottom and top floors ramped
- Partially accessible washroom



Looking for info on a venue not found here?  
Call/Text: 709-697-3323 Toll Free: 1-844-517-1376



## The Glacier Arena

Friday, February 7<sup>th</sup>

- **3pm-4pm:** General Skating, Rink #2
- **7pm-9pm:** "JAM'Min through the Decades" featuring Women of Rock & Friends, Rink #1

Looking for info on a venue not found here?  
Call/Text: 709-697-3323 Toll Free: 1-844-517-1376

### **Saturday, February 8<sup>th</sup>**

- **10am-2pm:** Frosty's Big Birthday Party, Rink #1
- **7:30pm - 12:30am:** The Masterless Men, The Fables and Celtic Connection, Rink #1

### **Sunday, February 9<sup>th</sup>**

- **1pm-2pm:** Frosty Cup. Glacier Arena, Rink 1
- **2:30pm-4:00pm (18-35 years of age), 4:30pm-6pm (36+ years of age):** The Kentucky Cup Alumni Hockey Game, Rink #1.
- **6:30pm-8:30pm:** Family Skating, Rink #1.

### **Friday, February 14<sup>th</sup>**

- **3pm-4pm:** General Skating. Glacier Arena, Rink #2

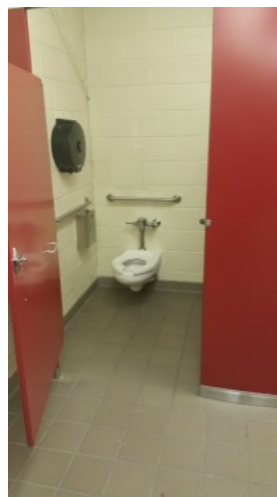
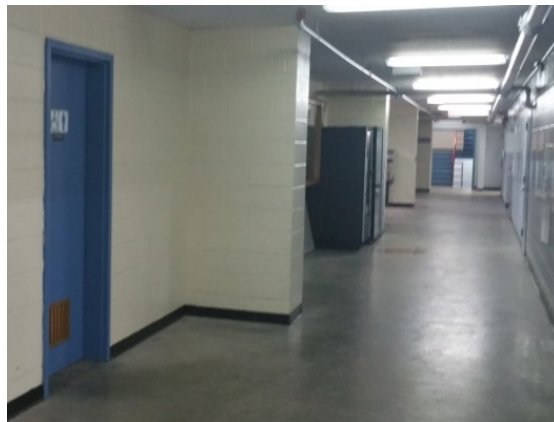
### **Saturday, February 15<sup>th</sup>**

- **2pm-3:15pm:** Costume Skating with Frosty. Glacier Arena, Rink #1

### **The Glacier Arena Accessibility Features**

- Multiple Blue Zone Parking spaces are available (approximately 16 in the front, 5 on the side of the building and 4 near the rear entrance of the building for a total of 25 designated spaces)
- Automated main entrances with a level access to main lobby
- Washrooms – Second Floor: One toilet stall is larger than others. This stall measures 4½ feet within the stall. Distance between stall wall and toilet is 30 inches. No automated buttons on washroom entrances. These washrooms are gender specific and not designed as a “family washroom”.
- The elevator at the Glacier is in the shape of a rectangle and can accommodate one person in a manual wheelchair plus two additional people standing. The width of the elevator door measures 31 inches. The elevator is located to the left from the main entrance and can access all three levels of the Glacier building.

- There are two lounge areas located on the second and third floors with washroom facilities available.
- The second ice area located at the Lower Entrance of the Glacier has a designated raised viewing area for patrons with disabilities with a secured portable ramp for easier access.





## **Richard Levandier Softball Field**

### **Friday, February 7<sup>th</sup>**

- **7pm-9pm:** Sno-Pitch Softball Tournament

### **Saturday, February 8<sup>th</sup>**

- **9am-6pm:** Sno-Pitch Softball Tournament

### **Sunday, February 9<sup>th</sup>**

- **9am-6pm:** Sno-Pitch Softball Tournament

## **Richard Levandier Softball Field Accessibility Features**

- Blue Zone parking
- Ramped entrance to building; also a bottom floor side entrance
- Doors equipped with automated door opener



## Morris Academy

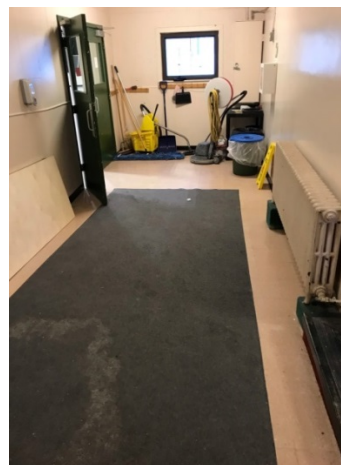
Saturday, February 8<sup>th</sup> and 9<sup>th</sup>

- 9am-5pm: Frosty Minor Indoor Soccer Tournament

Looking for info on a venue not found here?  
Call/Text: 709-697-3323 Toll Free: 1-844-517-1376

## Morris Academy Accessibility Features

- Blue zone parking available
- Separate entrance to gym with a 1 inch step to go in as main entrance has several steps





## Mount Pearl Royal Canadian Legion

**Saturday, February 8<sup>th</sup>**

- **9am-3pm:** Mixed Darts Tournament

### Mount Pearl Royal Canadian Legion Accessibility Features

- Blue Zone parking available with
- Entrance equipped with an automated button for easier entry.
- Both male and female washrooms have accessible features, grab bars, space for maneuverability and space under sinks.





## Mount Pearl Public Library

**Saturday, February 8<sup>th</sup>**

- 2pm-4pm: A Frosty Storytime

### Mount Pearl Public Library Accessibility Features

- Blue Zone Parking available (approximately 5 spaces in total)
- Level entry to main entrance of building
- Library all on one level
- Accessible Washroom with grab bars



Looking for info on a venue not found here?  
Call/Text: 709-697-3323 Toll Free: 1-844-517-1376



Looking for info on a venue not found here?  
Call/Text: 709-697-3323 Toll Free: 1-844-517-1376

## Admiralty House Communications Museum

**Sunday, February 9<sup>th</sup>**

- **1pm-3pm:** Admiralty's Awesome Afternoon

### Admiralty House Communications Museum Accessibility Features

- Blue Zone parking available
- Entrance equipped with automated buttons for easier entry
- Wheelchair accessible washrooms



## Paradise Bowl

**Monday, February 10<sup>th</sup>**

- **11am-1pm:** Sunshine Bowling League

**Thursday, February 13<sup>th</sup>**

- **9:30am-4pm:** Frosty's Seniors Bowling Tournament

**Friday, February 14<sup>th</sup>**

- **9:30am-1pm:** Frosty's Seniors Bowling Tournament

### Paradise Bowl Accessibility Features

- Level entrance to building
- Accessible washroom with grab bars
- Inside ramp to floor with bowling lanes



## The Mount Pearl Soccer Hut

### Thursday, February 6<sup>th</sup>

- 2pm-4pm: Seniors Crib Tournament

### Saturday, February 8<sup>th</sup>

- 1pm-3pm: Outdoor Family Skating Soiree

### Tuesday, February 11<sup>th</sup> and 13<sup>th</sup>

- 6pm-8pm: Outdoor Skating

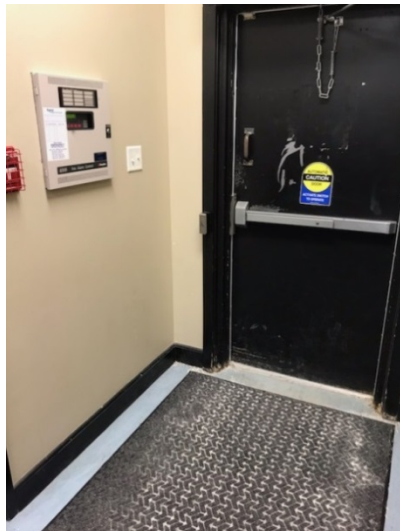
### Sunday, February 16<sup>th</sup>

- 1pm-2:30pm: Family Snowshoeing
- 1pm-3pm: Outdoor Skating

Looking for info on a venue not found here?  
 Call/Text: 709-697-3323 Toll Free: 1-844-517-1376

## The Mount Pearl Soccer Hut Accessibility Features

- Blue Zone Parking available
- Ramped entrance to building
- Entrance doors equipped with automatic door button
- Larger stall in washroom with handrails



## Gloria Pearson Community Centre

**Tuesday, February 11<sup>th</sup>**

- **6:30pm-8:30pm:** Frosty's Movie Night – Frozen II

## Gloria Pearson Community Centre Accessibility Features

- Blue Zone Parking available
- Ramp to entrance of building



## Mount Pearl Track & Field

Sunday, February 16<sup>th</sup>

- 8am-9:30am: Frosty's 5K Fun Run

## Mount Pearl Track & Field Accessibility Features

- Blue Zone Parking
- Ramp to entrance of building
- Accessible washrooms



## Power's Pond Boat House

Wednesday, February 12<sup>th</sup>

- 6:30pm-8pm: Adventures Snowshoeing under the Stars.

**Friday, February 14<sup>th</sup>**

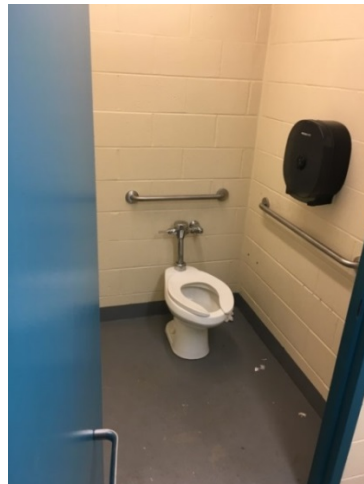
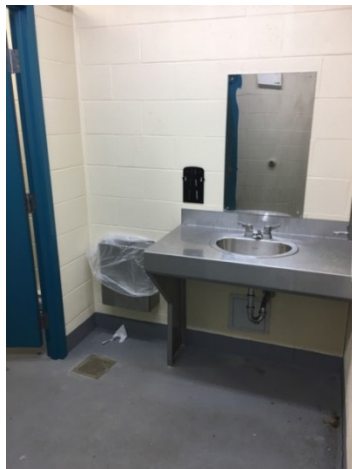
- 6:30pm-8pm: Adventures Snowshoeing under the Stars.

**Saturday, February 15<sup>th</sup>**

- 1pm-3pm: "Into the White" Outdoor Family Fun Day

**Power's Pond Boat House Accessibility Features**

- Blue Zone Parking
- Accessible washroom in boat house
- Paved and board-walk trails around the pond







## Park Avenue Pentecostal Church

**Wednesday, February 12<sup>th</sup>**

- **7pm-9pm:** Student Paint Night

**Saturday, February 15<sup>th</sup>**

- **2pm-4pm:** Park Kids Carnival

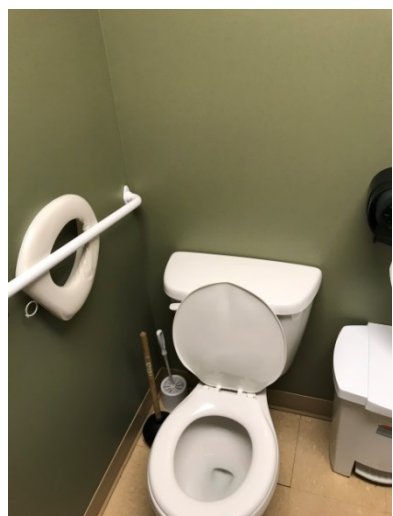
## Park Avenue Pentecostal Church Accessibility Features

- Blue zones parking available
- Designated accessible entrance just off from main entrance
- Wheelchair available for use on site
- Elevator lift operable by continuous input on button to travel between floors
- Partially accessible washrooms
- Designated quiet zone





Looking for info on a venue not found here?  
Call/Text: 709-697-3323 Toll Free: 1-844-517-1376



## Parish of the Ascension

**Sunday, February 9<sup>th</sup>**

- **5:30pm-6:30pm:** Community Ecumenical Church Service

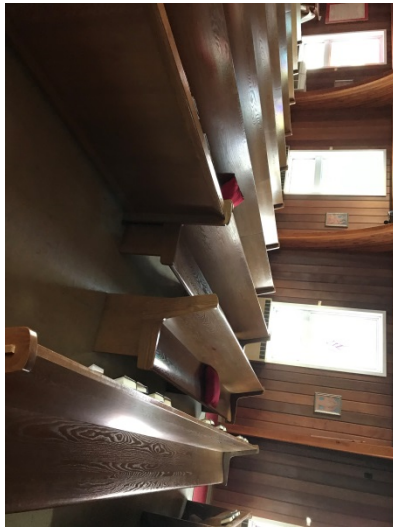
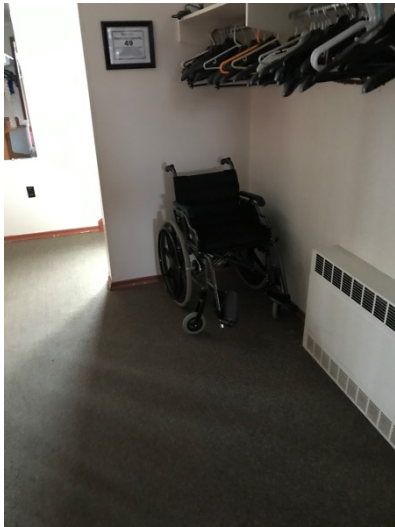
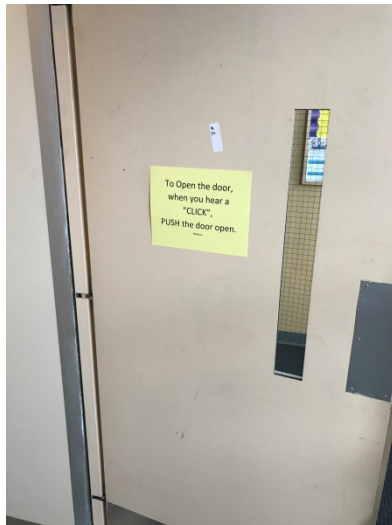
### Parish of the Ascension Accessibility Features

- Blue Zone parking spaces available
- Ramped entry to main front entrance
- Ramp entrance to parish auditorium
- Manual elevator lift (push button)
- Manual wheelchair on site available for those who need it

Looking for info on a venue not found here?  
 Call/Text: 709-697-3323 Toll Free: 1-844-517-1376

- Cut out spaces in between church pews for those using mobility devices
- Accessible washroom with grab bars for toilet
- assistive hearing devices are not working at the moment and the service will be available with a regular microphone and sound system





Looking for info on a venue not found here?  
Call/Text: 709-697-3323 Toll Free: 1-844-517-1376



## First United Church

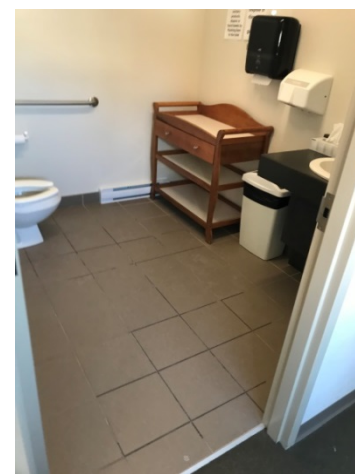
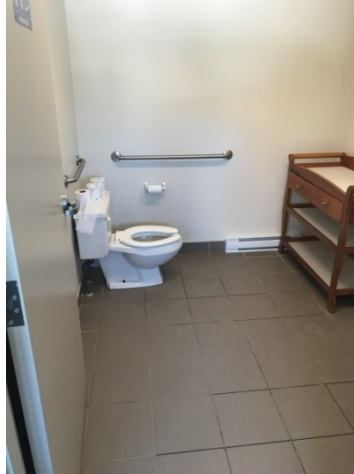
**Sunday, February 16<sup>th</sup>**

- **7pm-9pm:** An Evening with Kevin Collins

### First United Church Accessibility Features

- Blue Zone parking available
- Cut out spaces in between church pews for those using mobility devices
- Washroom with accessibility features such as toilet grab bars and space for maneuverability
- Assistive listening devices and Large Print hymn books available

Looking for info on a venue not found here?  
Call/Text: 709-697-3323 Toll Free: 1-844-517-1376



Looking for info on a venue not found here?  
Call/Text: 709-697-3323 Toll Free: 1-844-517-1376

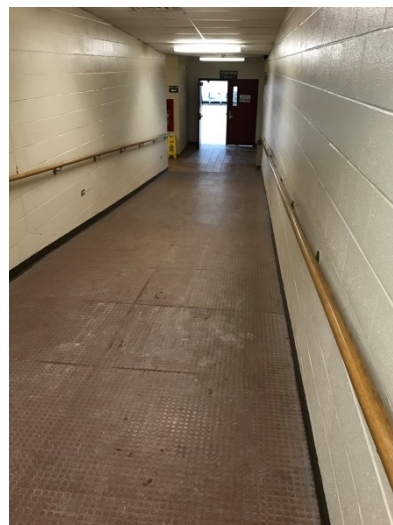
## O'Donel High School

Saturday, February 8<sup>th</sup>

- 2pm-4:30pm: Special Olympics Valentine's Party

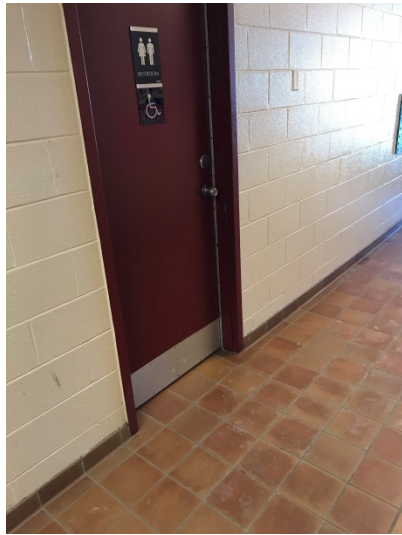
### O'Donel High School Accessibility Features

- Blue Zone parking available
- Tactile curb cuts for those who have partial sight or Blind
- Level main entrance with automatic door buttons to open doors from inside as would need to buzz in to enter school
- Inside ramp leading to gymnasium
- Washroom with accessibility features such as toilet grab bars and space for maneuverability



Looking for info on a venue not found here?  
Call/Text: 709-697-3323 Toll Free: 1-844-517-1376







**Need Additional Information About  
Festival Accessibility Features?**

**Call/Text: 709-697-3323**

**Toll Free: 1-844-517-1376**



Looking for info on a venue not found here?  
Call/Text: 709-697-3323 Toll Free: 1-844-517-1376